

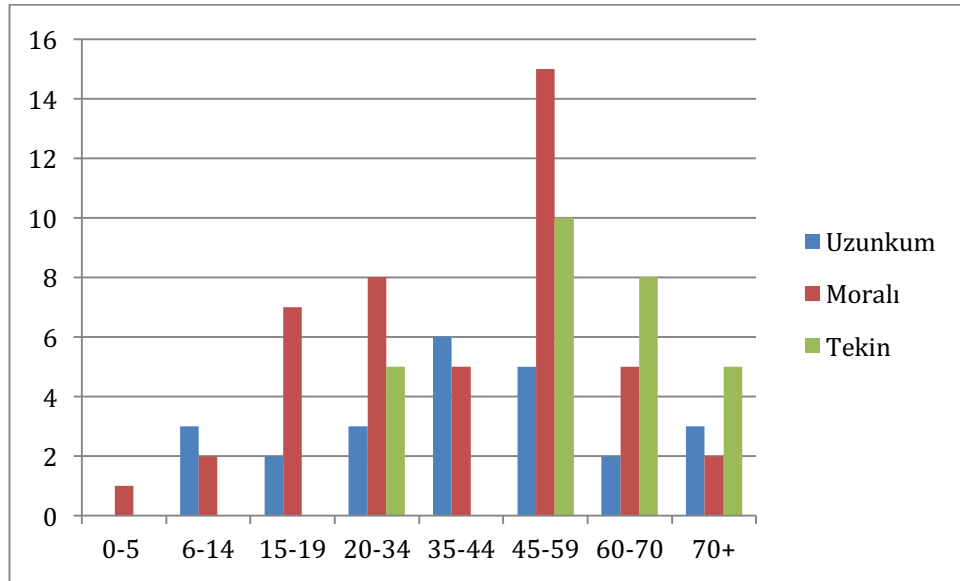
# **ANNEX-3**

## **Social Profile**

## HOUSEHOLD PROFILE IN THE PROJECT IMPACT ZONE

### Age Groups

The Figure 1 presents the age distribution among Aol. The Number of individuals who are aged between 0-5 are very low, whereas, the highest number of age group within the Aol is ages between 45-49. Tekin Quarter has the highest number of individuals who are aged 70 and over, whereas, Moralı Quarter has the highest number of youth individuals within the Aol.



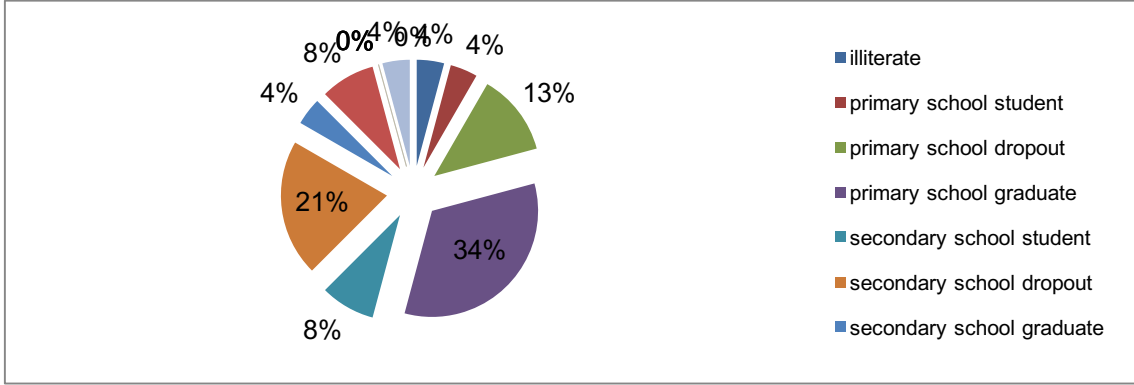
**Figure 1.** Age Distribution of Survey Population on the Basis of Quarters

### Marital Status

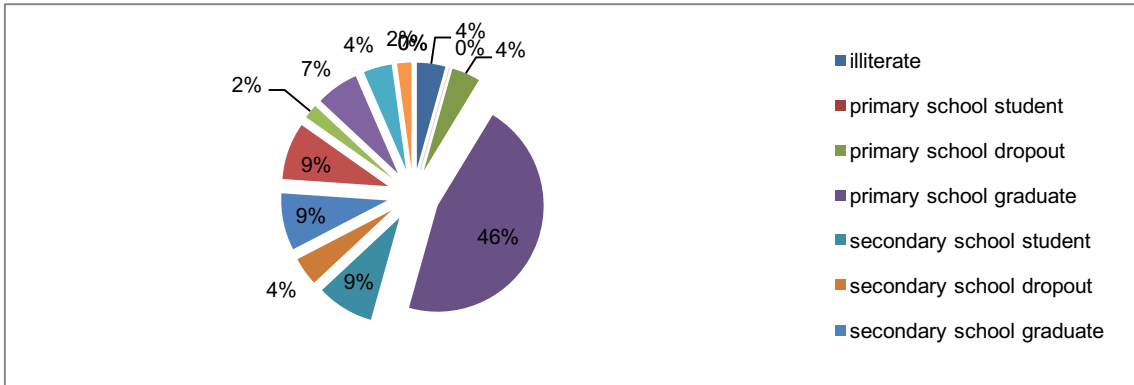
Approximately 65% of the population in the Aol is married, whereas, the remaining 31% is single and 7% is widow.

### Education

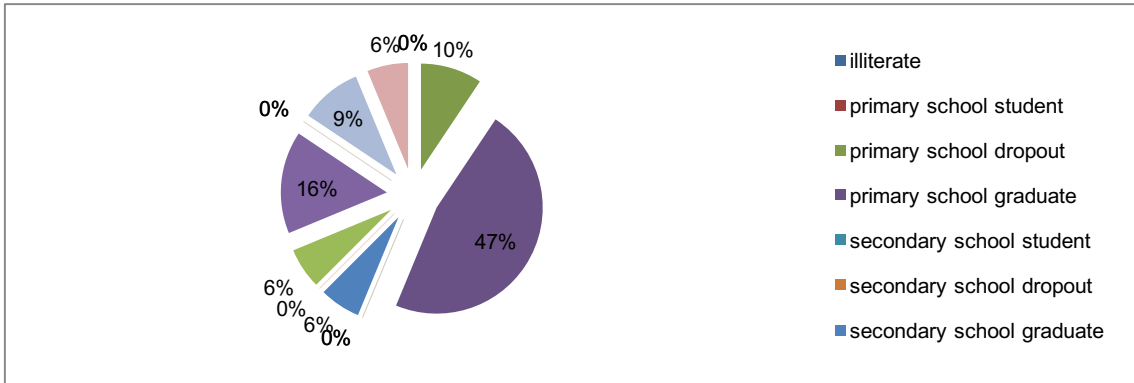
As can be seen from the figures below, the primary school graduates constitutes majority of the community and secondary school graduates are the second most populous group. The highest education levels are observed in Tekin. Detailed education levels of the household members are presented in the Figure 2, Figure 3 and Figure 4 below.



**Figure 2.** Education Figures of Surveyed Population in Uzunkum Quarter



**Figure 3.** Education Figures of Surveyed Population in Moralı Quarter



**Figure 4.** Education Figures of Surveyed Population in Tekin Quarter

### Employment and Income

According to interviews held at residential areas, the employment condition varies on each quarter. Uzunkum quarter is mostly comprised of unemployed individuals, on the other hand, employed individuals constitute the majority of the population in Moralı quarter. As for the Tekin quarter, retired individuals constitute the majority of the population. Unemployment rate being low in Moralı is thought to be the result of job opportunities provided by the Project. As mentioned before, 15 people from Moralı were employed within the scope of the Project. Details of the employment status of household members are presented in figures below.

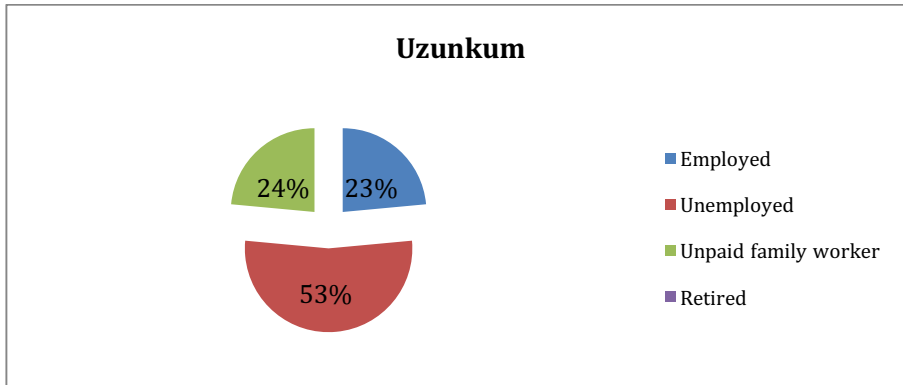


Figure 5. Employment Figures of Uzunkum Quarter

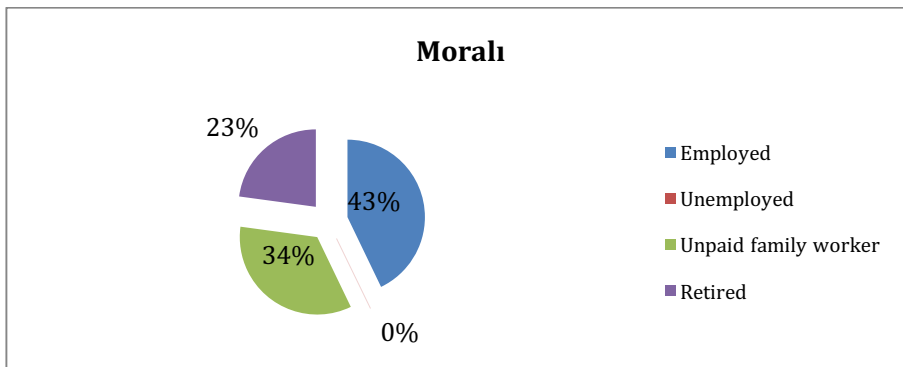


Figure 6. Employment Figures of Moralı Quarter

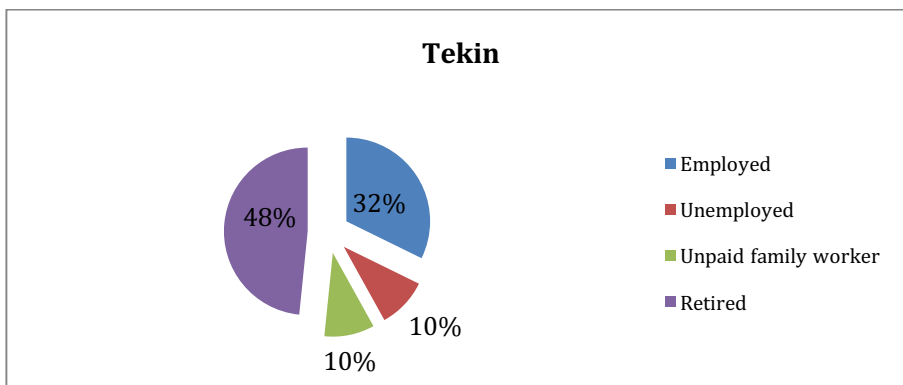


Figure 7. Employment Figures of Tekin Quarter

In terms of secondary source of income, 65% of the households engaged in agricultural production and 32% in animal husbandry. The main agricultural products produced in Uzunkuyu Quarter are corn, figs, cotton, on the other hand, in Moralı Quarter, cotton, olives and fig are considered as the main agricultural products. In terms of Tekin Quarter, figs and olives take the lead of the agricultural production.

### **Vulnerable Groups**

The interviews revealed that vulnerable groups are mostly comprised of individuals with permanent disease and individuals living based on donations. 7 high blood pressure patients, 5 cardiac patients, 5 pulmonary patients and 6 diabetics were identified within the Aol. There are total of 5 individuals determined to live on donations in all three of the quarters. Furthermore, there are total of 10 individuals who are aged 70 and over in the Aol, the majority of elder groups stated to be reside in Tekin Quarter. Last, according to interviews, there are female head of household in Tekin Quarter.

### **Housing Conditions**

The following list presents housing conditions of Aol.

- The majority of the head of households rated their housing conditions in average in terms of comparing to the rest of region.
- The average size of houses in Aol is between 50-100 m<sup>2</sup>.
- 97% of the interviewers are owner of the houses and average rent rate is estimated to be 300 TL.
- All the houses are stated to be made from stone and brick.
- 90% of the houses are connected to municipal water.
- 75% of the houses have restrooms within the house.
- Septic tanks are being used for the disposal of waste water.
- Wood is the main source of heat.
- Municipality is responsible for collecting domestic waste

### **Project Information Level**

The result of household surveys related to Project information level is presented respectively for each settlements below.

- Uzunkum: 40% of the participants have no information about the Project, whereas, 60% has inadequate information.
- Moralı: 38% of the participants have no information about the Project, whereas, 8% has inadequate information and 54% has adequate information.
- Tekin: 10% of the participants have no information about the Project, whereas, 80% has inadequate information and 10% has adequate information.

The information given above shows that, there is a serious need of information disclosure regarding the Project. Information level of Moralı is higher than the other settlements and this situation is directly related with the public participation meeting conducted at coffee house, employment opportunities created within the settlement and land acquisition process

conducted within the settlement. Respondents recommended following suggestions to raise their level of knowledge regarding the Project. Different expectations of each settlement and suggested grievance mechanism are presented below;

**Table 1.** Suggested Information Disclosure and Grievance Tools

Name of the Settlement	Information Disclosure Tool	Suggested Grievance Tool
<b>Uzunkum</b>	<ul style="list-style-type: none"> <li>Academic personnel should be assigned to present brief information regarding the Project.</li> <li>A website should be established</li> </ul>	<ul style="list-style-type: none"> <li>Project information office</li> <li>Grievance box</li> <li>Phone -line</li> </ul>
<b>Moralı</b>	<ul style="list-style-type: none"> <li>An independent consultant team should conduct public participation meeting.</li> <li>Brochures and information banners should be prepared and distributed to the settlements.</li> </ul>	<ul style="list-style-type: none"> <li>Community lesion officer should be hired.</li> <li>Grievance boxes should be placed in the settlements.</li> </ul>
<b>Tekin</b>	<ul style="list-style-type: none"> <li>Newspapers and other media tools should be used to publish information about the Project</li> </ul>	<ul style="list-style-type: none"> <li>Community lesion officer should be hired.</li> <li>Grievance boxes should be placed in the settlements</li> <li>Project authorities should visit the settlement.</li> </ul>